

Dear Diary 3.0

(C)1994-95 Q&D Software Development



Menus

File

Options

ToolBar

Registration Benefits:

The registered version of Dear Diary differs from the shareware version, in that it supports **Password Protection** of your important and personal information. In addition, registered users are not subjected to 'nag' screens or any other reminder messages which occur in the shareware version.

In addition to receiving added features, Dear Diary registered users are entitled to **FREE UPGRADES** to this program as they occur. (Shipping and handling charges may be incurred in some cases.)

Registered users of software products by **Q&D Software Development** have come to expect high quality customer service, whether by telephone or electronically. We encourage suggestions from our registered users. If you have any questions or suggestions about any of our products, please do not hesitate to let us know.

Ordering Information:

The registered version of Dear Diary is available for \$19.95, plus \$3.95 shipping and handling. (Shipping and handling charges of \$4.95 apply for orders outside the U.S.)

There are three acceptable methods of payment:

- To order Dear Diary via credit card, call the Public (Software) Library at 1-800-242-4775 (1-800-2424-PSL), or 1-713-524-6394. **The preceding phone numbers are for CREDIT CARD ORDERS ONLY.** We accept VISA, MasterCard, American Express, and Discover. Specify PsL Product Number 11664. When

ordering by credit card, please be prepared to give your name and billing address as it appears on the card.

You may also use your credit card to order via the Internet or regular postal mail! If you have World Wide Web access, you can order on-line using your credit card by pointing your browser to our home page at <http://www.intac.com/~dversch/> and filling out the order form. Or you can just e-mail us your name, address, phone number (optional), credit card type, number, and expiration date. CompuServe users may e-mail credit card orders to **76336,3271**. Internet users can send e-mail orders to dversch@intac.com. Our postal mailing address is listed below. Oh, and don't forget to mention which of our programs you are ordering!

- To order Dear Diary on-line via CompuServe, **GO SWREG and register ID# 3178.**
- To order Dear Diary by mail, send a check, money order, or credit card number (see above) payable to Q&D Software Development to:

Q&D Software Development
10-B Sentinel Court
Chatham, NJ 07928

Tech Support:

As of April, 1995 Q&D Software Development now has a support forum on CompuServe! Feel free to stop in and visit us at GO WINAPD, Library 1.

For free technical support, registered users of Dear Diary have several options. You may call us at **(201)635-1824**, leave e-mail at **CompuServe ID# 76336,3271**, leave e-mail at Internet address dversch@intac.com, visit our forum on **America On Line**, or visit our home page on the Internet's World Wide Web at <http://www.intac.com/~dversch/>.

Users of the shareware version must rely on this help file for support.

File

[Open...](#)

[Print...](#)

[Compact Database...](#)

[Repair Database...](#)

(C)1994-95 Q&D Software Development - Helpfile generated by VB HelpWriter.

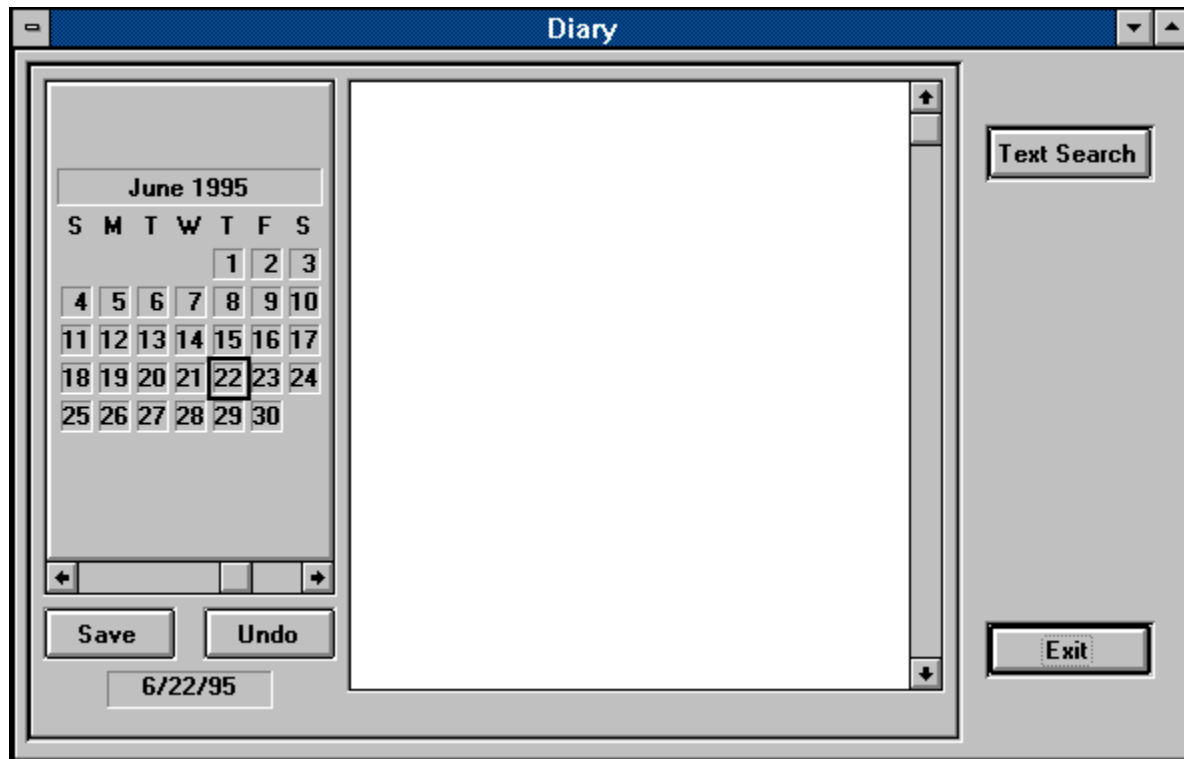
Options

[Change Password...](#)

(C)1994-95 Q&D Software Development - Helpfile generated by VB HelpWriter.

Diary Window

Clicking Open... from the File Sub-Menu will cause the Diary Window to be displayed:



When the Diary Window is first opened it is turned to the current day. You may begin entering your daily entry by clicking on the journal window to the right of the calendar control.

To switch between dates, click the desired date in the calendar control, or use the calendar control's scroll bar. You can save changes to any entry by either moving to another date or clicking the Save button. The Undo button causes the contents of the journal window to return to its original contents, providing the entry has not yet been saved.

A powerful feature of Dear Diary is the ability to do a text search. A text search is activated by clicking the Text Search button. This causes the Text Search Window to be displayed. The Text Search Window allows you to enter a text string and to indicate whether you would like to do a case-sensitive search. Once you've entered your search criteria in the Text Search Window, Dear Diary will return a set of records containing each record in your journal which matches the criteria you entered. You may utilize the data control underneath the journal window to scroll back and forth among the records in your recordset. The calendar control is not necessary when executing a text search and is thus disabled. To return from a text search, click the End Search button.

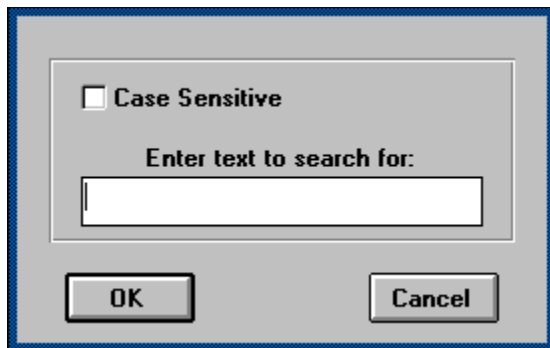
Clicking the Exit button closes the Diary Window. Any changes that have not

been saved are lost.

(C)1994-95 Q&D Software Development - Helpfile generated by VB HelpWriter.

Text Search Window

Clicking the Text Search button in the Diary Window causes the Text Search Window to be displayed:



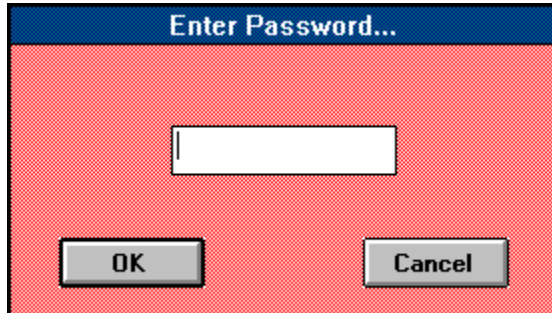
To begin a text search, enter the string for which you wish to search in the Search String text box. If you wish your search to be case sensitive, click the Case Sensitive check box.

Clicking the OK returns you to the Diary Window and presents you with your resulting recordset. You may scroll through this recordset using the data control in the Diary Window. (While in Text Search mode, the calendar control on the Diary Window is disabled.)

To come out of Text Search mode, click on the End Search button in the Diary Window.

Enter Password...

The Enter Password... window is displayed when Dear Diary is loading.



The registered version of Dear Diary forces the user to enter a password in order to gain access to the data stored in the program. The shareware version offers no password protection.

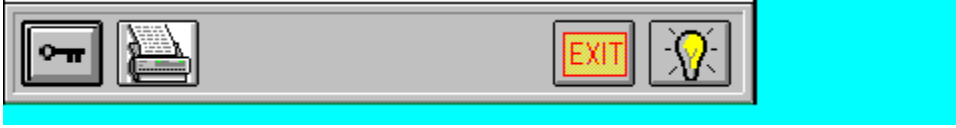
In the registered version once a password is entered and the user clicks the OK button, the password that was entered is checked against that which is stored in the system. If it matches, entry into the program is granted. If it does not match, an alarm is sounded and the program aborts. If the user clicks the cancel button the program aborts as well.

Passwords in Dear Diary are case-sensitive. In other words, if your password was originally stored as "blue", entering "BLUE" or "Blue" will not allow entry into the system.

A password must be between 4 and 8 characters long.

(C)1994-95 Q&D Software Development - Helpfile generated by VB HelpWriter.

ToolBar



The Key toolbar button opens your diary. It is a shortcut for clicking File|Open from the main menu.



The Print toolbar button causes the Print Window to open and allows printing of your entries within a specified date range that you choose.



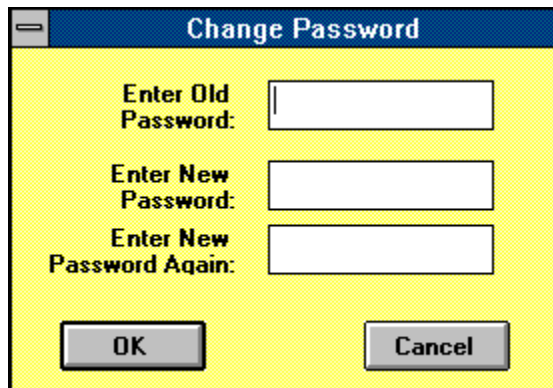
The Exit toolbar button exits the Dear Diary program. It is a shortcut for clicking File|Exit from the main menu.



The Help toolbar button brings up Dear Diary's Help System. It is a shortcut for clicking Help|Contents from the main menu.

Change Password

Clicking Change Password from the Options Sub-Menu causes the Change Password window to be displayed:



The image shows a dialog box titled "Change Password" with a yellow background and a blue title bar. It contains three text input fields. The first field is labeled "Enter Old Password:". The second field is labeled "Enter New Password:". The third field is labeled "Enter New Password Again:". At the bottom of the dialog box, there are two buttons: "OK" and "Cancel".


To change your password you must first enter your old password in the space provided. This is so that in the event you leave your PC unattended while Dear Diary is running, no one can come along without your knowledge and change your password.

Next, you are asked to enter your new password twice. This is to avoid any typographical errors, etc. (Since the actual characters you enter are not displayed for reasons of security, you can not verify visually that you've actually entered what you intended to enter. The system matches both new entries to make sure that this is the case.)

Clicking the OK button will save your changes and make them effective immediately.

Help

You can access Dear Diary's help system in a number of ways. To access the help system from the beginning, you may click on either Help|Contents from the main

menu, or the Help toolbar button . Either of these methods will bring you to the top of the help system.

You may also obtain 'context-sensitive' help by pressing the F1 key from anywhere in Dear Diary. This will cause the help system to bring up the topic relevant to where you are in the system.

Ordering Information:

The registered version of Dear Diary 3.0 is available for \$19.95, plus \$3.95 shipping and handling.

To order Dear Diary by phone via credit card, call the Public (Software) Library at 1-800-242-4775 or (713)524-6394. **These numbers are for CREDIT CARD ORDERS ONLY.** We accept VISA, MasterCard, American Express, and Discover. Specify PsL Product Number 11664.

To order on-line via CompuServe, GO SWREG and register ID# 3178.

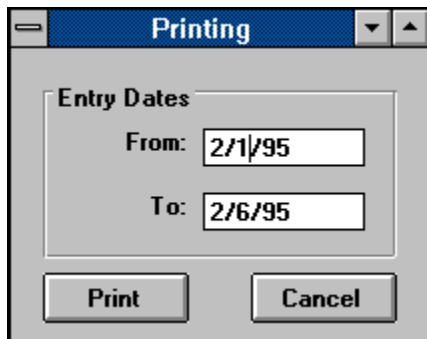
To order Dear Diary on-line with your credit card, point your Web browser to <http://www.intac.com/~dversch/> and fill out the order form.

Tech Support:

For free technical support, registered users may call us at (201)635-1824, or leave e-mail at Compuserve ID# 76336,3271 or dversch@intac.com. Unregistered users must rely on this help file for support.

Printing

The Print Window can be accessed either by clicking File | Print from the Main Menu or by clicking on the Print button in the Toolbar.



To print your entries, simply fill in the date range you desire and click the Print button.

Compact Database

The Compact Database function is accessed by clicking File | Compact Database... from the main menu.

Dear Diary, like many other programs, makes use of a database to store its associated data. The database holds all of your entries.

Due to the nature of database design it is sometimes necessary, in order to maintain program speed and responsiveness, to store data in the most convenient spot in the database, rather than searching for the most cost-efficient in terms of disk space.

Dear Diary provides the Compact Database function as a method for reclaiming that extra disk space. Depending upon the speed of your computer and the size of your database, the process may take anywhere from a few seconds to several minutes, after which you *may* realize a 15-20% reduction in the size of your database.

<p>Note: It is strongly recommended that you make a backup of your database file prior to attempting to compact it. (The Dear Diary database file is named DIARY_.MDB.)</p>

Repair Database

The Repair Database function is accessed by clicking **File | Repair Database...** from the main menu.

As any experienced computer user can attest to, it is possible for data files to become corrupt. Causes of data corruption can range anywhere from power outages or fluxes, to turning your PC off in the middle of a program, to exiting a program in ways other than those prescribed by the program's developers. (Some very knowledgeable computer gurus even attribute data loss and corruption to gremlins. Fortunately, we are not that knowledgeable.)

Should you experience problems with your Dear Diary data such as error messages suggesting that your data is somehow corrupt or worse, you may attempt to repair your database using Dear Diary's Repair Database function. We make no guarantees, but depending on the extent of the damage it is often possible to repair a damaged database file, restoring it to its former perfect self.

<p>Note: Before attempting to repair your database, we strongly recommend making a backup copy of it. The Dear Diary database file is <code>DIARY_.MDB</code>.</p>

Glossary



C

calendar control
case sensitive

D

data control

J

journal window

T

text search

journal window

The journal window is where you enter your daily journal entry. It can hold up to 64000 characters per day and is located to the right of the calendar control in the Diary Window.

calendar control

The calendar control gives a visual representation of the date in which you are currently located. It is also used to jump from date to date. You can click on any date within the visible month to view or edit the journal entry for that date. You can jump from month to month by clicking either the left or right end buttons on the calendar's scroll bar. You can jump from year to year by clicking the scroll bar itself. If you are jumping to a year that has not been initialized in the system, you will be offered a chance to initialize that year or not.

NOTE: The calendar control is disabled during a text search.

text search

A text search allows you to search your entire diary for a specific text string. It can be very useful when looking up entries pertaining to a specific person, place, event, etc. The [data control](#) underneath the [journal window](#) allows you to scroll through each date in which your specified text appears. To return from a text search click the End Search button.

NOTE: The [calendar control](#) is not necessary during a text search and is thus disabled.

data control

The data control appears under the journal window during a text search. It offers you the ability to move to the first, previous, next or last record in a recordset.

case sensitive

A case sensitive search will return records that contain only text which matches your search string exactly. For example, if you are searching for all records containing the string 'leaves' and you check the Case Sensitive Checkbox, any records containing the string 'Leaves' or 'LEAVES' will NOT be returned as part of your resulting recordset.

